

Goodall®



RDROK

SUPER LONG LIFE

CHEMICAL 200 PSI

350 PSI

SUPER DR

RHINO

SUPER INFERNAL

PULP KING



USING DAMAGED ASSEMBLY COULD BE HAZARDOUS

HOSE AND COUPLINGS MUST BE INSPECTED PRIOR TO USE

CHECK CHEMICAL AND TEMPERATURE COMPATIBILITY PRIOR TO USE



The GOODALL Difference.

Goodall has been the gold standard in industrial hose solutions for over 100 years, developing a globally recognized brand that delivers superior quality and value to its customers.

Goodall's robust product portfolio offers extended lifecycles and reduced ownership costs. With a line of problem-solving products, Goodall excels in precision and durability. Goodall hoses surpass global benchmarks, reflecting a commitment to excellence. From its plant in Collingwood, Ontario, to strategic destinations throughout the North American market, Goodall delivers unmatched quality.

Superior engineering. Advanced compounds. Meticulous manufacturing.

Goodall hoses are the result of continuous improvement and attention to detail. It's why we're the first name in Anhydrous Ammonia, LPG, Steam, Industrial, Air and Chemical hose. We bring innovation to the table, including engineered hoses built with proprietary compounds and braided reinforcement that result in a longer life and exceptional value.

Goodall critical service hoses ensure quality construction that delivers high performance with a low lifetime cost while meeting regulatory and legal compliance. As an ISO 9001:2015 certified company, Goodall is committed to ensuring quality. We operate as an organization that prioritizes environmental health by reducing landfill waste and minimizing the consumption of natural resources.



Exceptional Performing Problem Solvers

The exceptional performance and value of Goodall products has been proven time and time again. The robust construction and premium materials used in Goodall hoses make them perfect for extreme applications where other hoses have failed. Goodall hoses provide increased safety, less down time, reduced maintenance requirements, and a lower total cost of ownership. Customers who experience the superior quality and long life of Goodall hose, become converted for life, and refuse to use anything else!

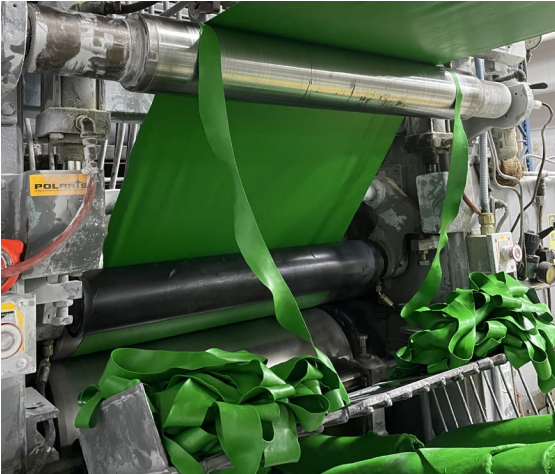
The Goodall Team

Goodall hoses are manufactured in North America by an experienced and dedicated team with a relentless commitment to exceptional quality and continuous improvement. The pride in their workmanship shines through with every hose they produce. They know their customers depend on their products to operate safely and efficiently – a responsibility they truly embrace.

Goodall and LGG Industrial

Goodall operates as part of LGG Industrial and its products are available exclusively through LGG Industrial in North America and select distributors in other parts of the world. Backed by LGG Industrial's experienced and knowledgeable sales team and vast distribution network, Goodall products are available across North America to solve the toughest hose problems.





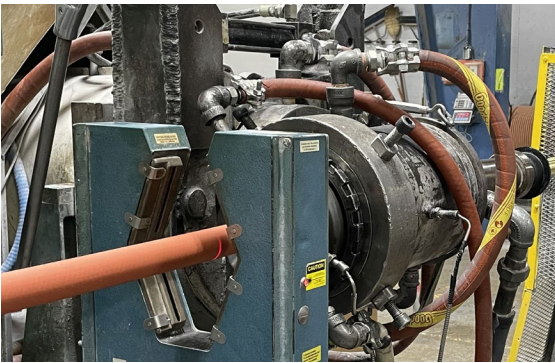
Superior Quality Hose Construction

Premium Proprietary Rubber Compounds

Not all rubber compounds are created equal. Goodall uses its own premium quality rubber compounds to ensure safety, durability, long life, and overall superior performance.

Seamless Extruded Tube

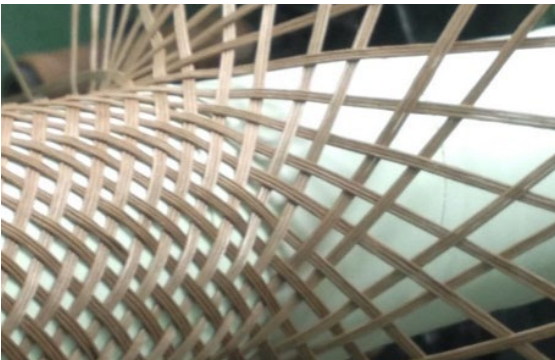
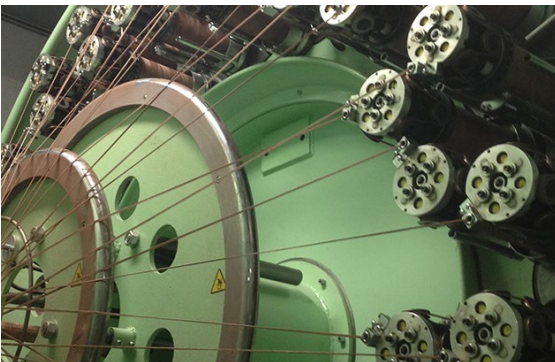
The tube is the primary contact point for the media being conveyed through a hose. Goodall predominantly uses a smooth homogeneous extruded tube to eliminate the risk of a leak path that can be created by the seam of a spiral wrapped tube.



Braided Reinforcement

The reinforcement is fundamental in determining the quality of a hose and is critical for providing structure and strength. Goodall hoses are built using braided rather than spiral construction, for better kink resistance, cross-sectional stability under pressure and increased adhesion.

Internal reinforcement materials, including high tensile brass-plated wire, stainless steel wire, Kevlar, poly/cotton blends and fiberglass are selected to suit the application. For suction hose, a steel wire or monofilament helix is embedded within the hose structure for increased flexibility and cross-sectional stability.

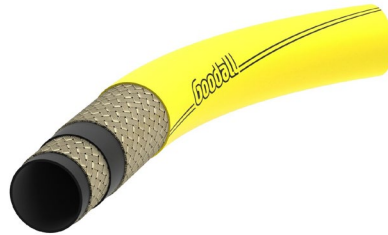


Product Spotlight



N2861 Super Inferno

Superior quality steam hose featuring a proprietary Chlorobutyl tube and a proven 20:1 safety ratio.



N3 Hardrock

Extremely durable air hose built to withstand the harshest environments and provide an exceptionally long service life.



N2804 Elephant Hide & N2805 Elephant Hide Plus LPG Hose

Robust LPG hoses built to handle severe abrasion and remain pliable for the life of the hose.



N2737 Black Diamond

Light and flexible Type 2 LPG Hose built to meet UL21 & CGA requirements.



N2700 Kemflex

Resilient and flexible UHMWPE chemical hose compatible with 95% of chemicals on the market.



N1446 Super Long Life

The safest and longest-lasting Anhydrous Ammonia hose in the industry, featuring a proprietary, extremely low-permeable Chlorobutyl tube and an industry-leading 10-year warranty.



To learn more about
Goodall Hose,
please visit us at
goodalhoses.com.

